

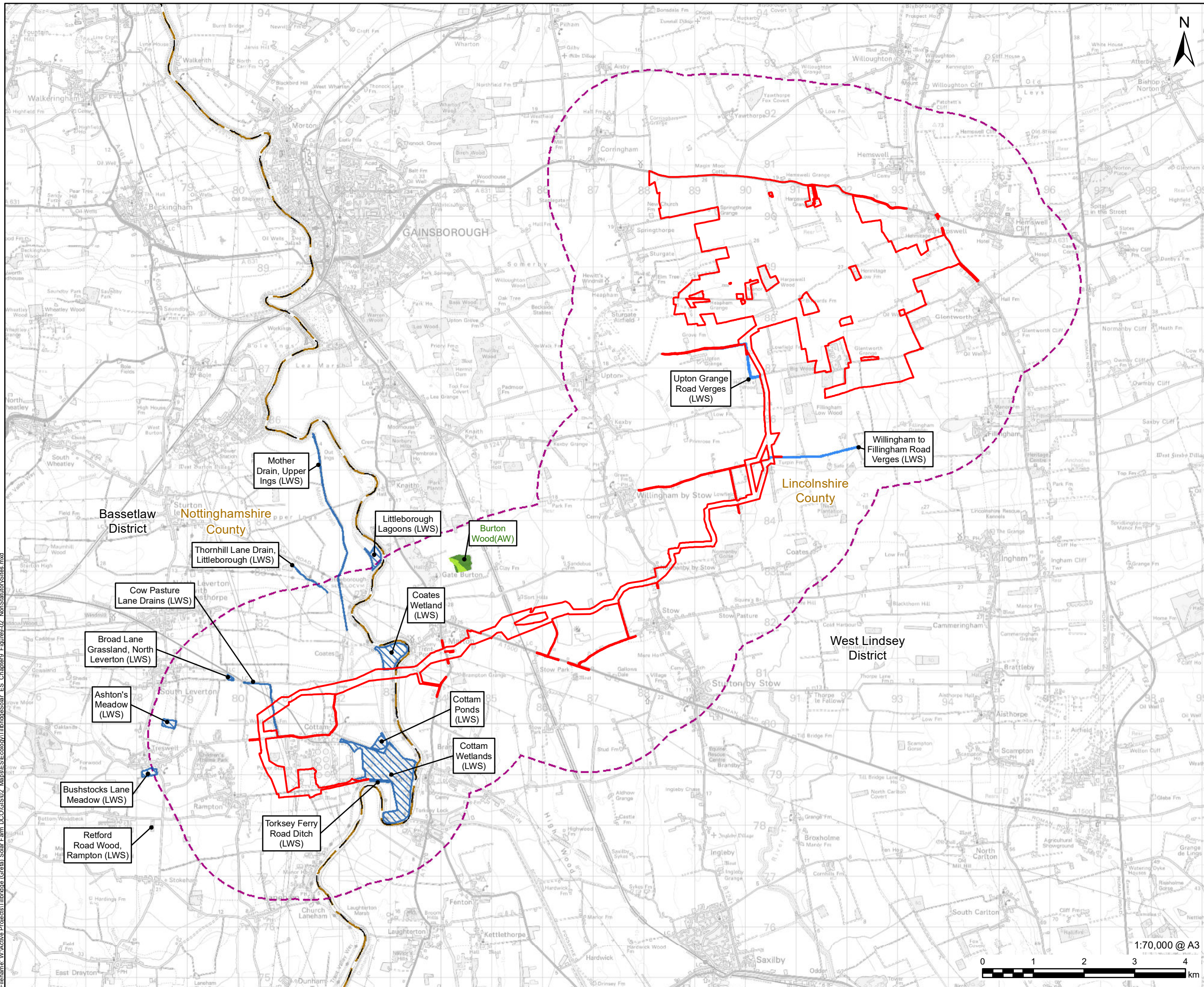
**Tillbridge Solar Project
EN010142**

**Volume 6
Environmental Statement**
Figure 9-2: Non Statutory Sites Designated
For Nature Conservation Value
Document Reference: EN010142/APP/6.3

**Regulation 5(2)(a)
Infrastructure Planning (Applications: Prescribed Forms and
Procedure) Regulations 2009**

**April 2024
Revision Number: 00**

tillbridgesolar.com



PROJECT
Tillbridge Solar

CLIENT
Tillbridge Solar Limited

CONSULTANT
Aldgate Tower
2, Leman Street
London, E1 8FA
United Kingdom
T +44-0207-645-2000

- LEGEND**
- Order Limits
 - County Boundary
 - District Boundary
 - 2km Study Area for Non-Statutory Sites
 - Lincolnshire Local Wildlife Site
 - Nottinghamshire Local Wildlife Site
 - Ancient & Semi-Natural Woodland
 - Ancient Replanted Woodland

NOTES
© Crown copyright and database rights 2024.
Ordnance Survey 0100031673.

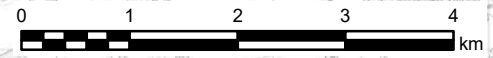
ISSUE PURPOSE
DCO Submission

PROJECT NUMBER
60677969

FIGURE TITLE
Non Statutory Sites Designated for
Nature Conservation Value

FIGURE NUMBER
Figure 9-2

1:70,000 @ A3



This drawing has been prepared for the use of AECOM's client. It may not be used, modified, reproduced or relied upon by third parties, except as agreed by AECOM or as required by law. AECOM accepts no responsibility, and denies any liability whatsoever, to any party that uses or relies on this drawing without AECOM's express written consent. Do not scale this document. All measurements must be obtained from the stated dimensions.